

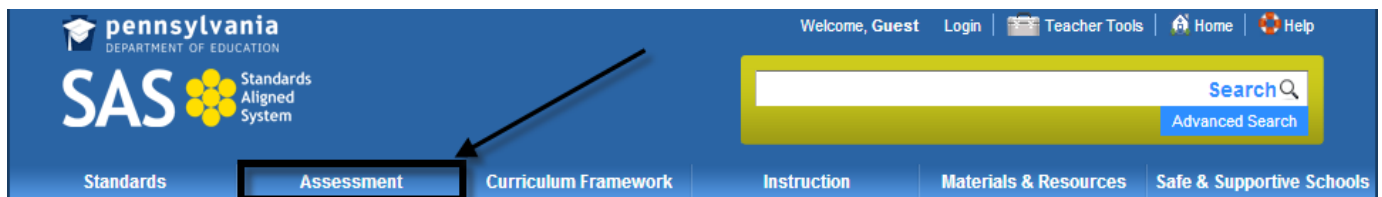
Assessment

Assessment is a process used by teachers and students before, during, and after instruction to provide feedback and adjust ongoing teaching and learning to improve student achievement and to provide appropriate challenge for all students at their instructional levels.

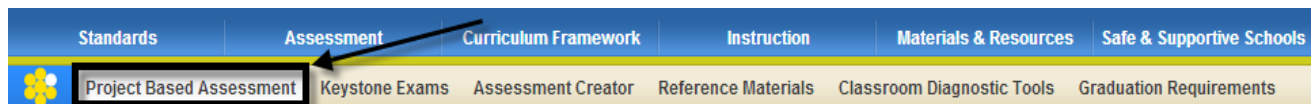
Project Based Assessment

View information about **Project Based Assessment**. Students who are unable to meet Chapter 4 requirements relating to high school graduation requirements through the Keystone Exam may qualify to complete a **Project Based Assessment**.

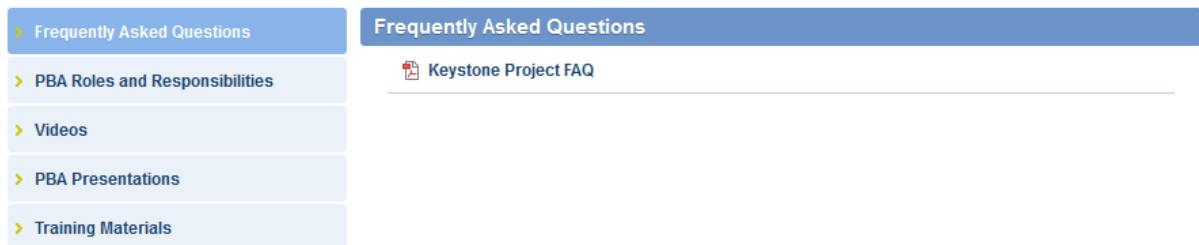
1. Click the **Assessment** tab on the **Navigation Bar**.



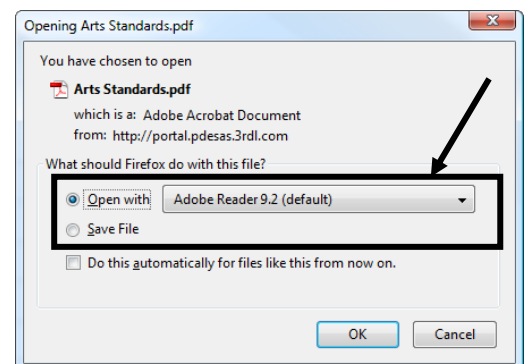
2. Click on the **Project Based Assessment** tab.



3. Click on the appropriate sub-topic, and then click the title of the document you wish to view:



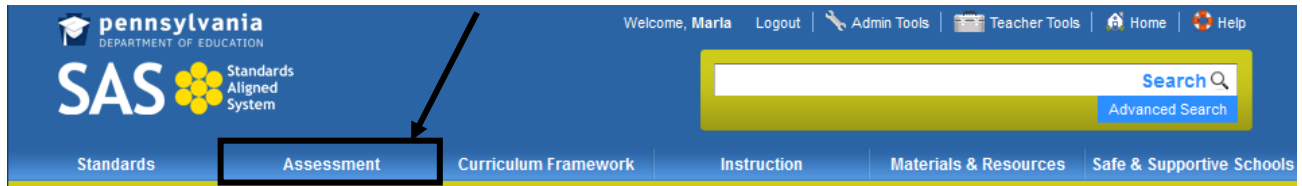
4. You will be prompted to either **Open** the file, or **Save** the file to a location on your hard drive, file server, or other storage device.



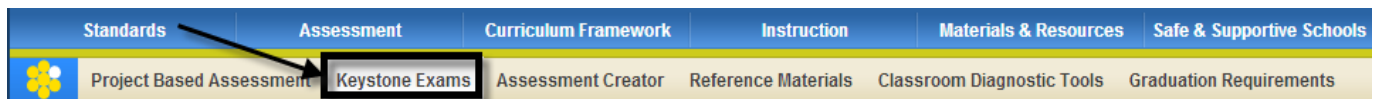
Keystone Exams

The **Keystone Exams** are end-of-course assessments designed to assess proficiency in various subjects.

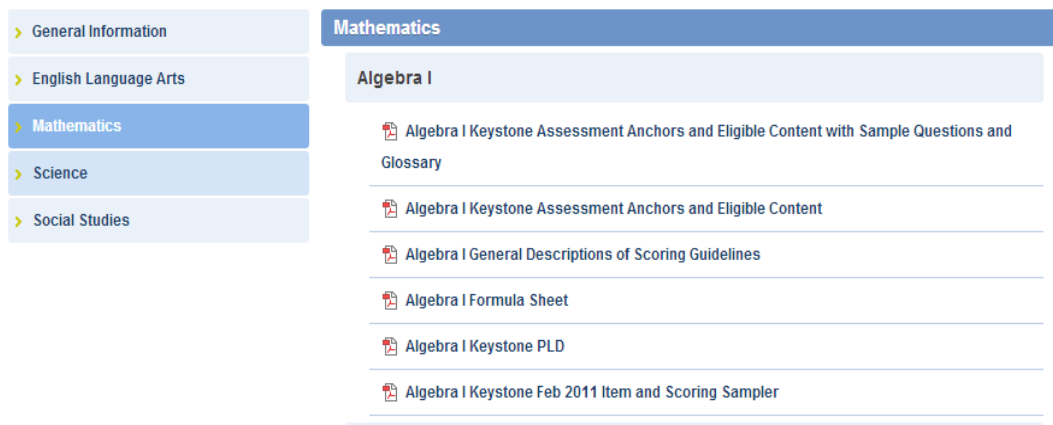
1. Click the **Assessment** tab on the **Navigation Bar**.



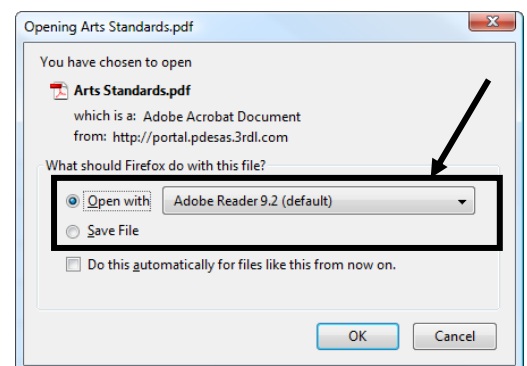
2. Click the **Keystone Exams** tab.



3. Locate the appropriate **Subject Area**, and click the title of the document you wish to view.



4. You will be prompted to either **Open** the file, or **Save** the file to a location on your hard drive, file server, or other storage device.

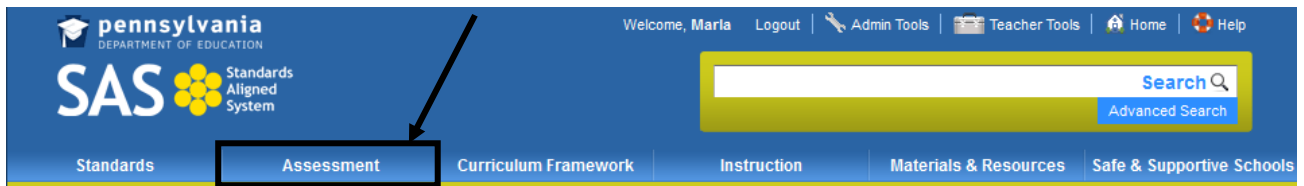


Assessment Creator

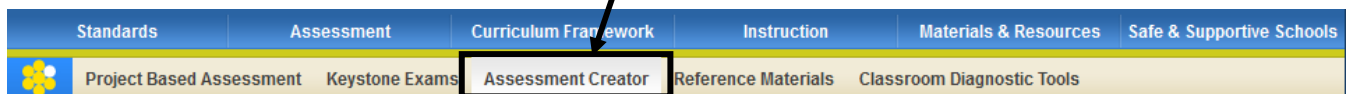
The **Assessment Creator** allows educators to create standards-based student assessments. Using the creator, users can search for and select a specific type of assessment question for a particular grade or course. Educators have the ability to print the student assessment along with the corresponding answer and scoring guide, as well as to save the assessment as a PDF or Microsoft Word document.

To Access the Assessment Creator:

1. Click the **Assessment** tab on the **Navigation Bar**.



2. Click the **Assessment Creator** tab.



About Assessment

For more information on the four different types of assessment, visit the **About Assessment** tab.

1. Click on the plus sign next to an **Assessment** type to read the full definition.

Summative Assessment

Seeks to make an overall judgment of progress made at the end of a defined period of instruction. They occur at the end of a school level, grade, or course, or are administered at certain grades for purposes of state or local accountability. These are considered high-stakes assessments and the results are often used in conjunction with No Child Left Behind (NCLB) and Adequate Yearly Progress (AYP). They are designed to produce clear data on the student's accomplishments at key points in his or her academic career. Scores on these assessments usually become part of the student's permanent record and are statements as to whether or not the student has fallen short of, met, or exceeded the expected standards. Whereas the results of formative assessments are primarily of interest to students and the teachers, the results of summative assessments are also of great interest to parents, the faculty as a whole, the central administration, the press and the public at large. It is the data from summative assessments on which public accountability systems are based. If the results of these assessments are reported with reference to standards and individual students, they can be used as diagnostic tools by teachers to plan instruction and guide the leadership team in developing strategies that help improve student achievement. Examples of summative assessment are PSSA and Terra Nova.

Formative Assessment

Benchmark Assessment

Diagnostic Assessment

Creating an Assessment:

1. Enter a **Keyword**.

2. Select a **Subject Area** from the drop-down list.

Select a Grade Level/Subject Area
Select a Course

-- Select a Subject Area --

-- Select a Subject Area --

Reading, Writing, Speaking, and Listening (324)

Mathematics (2308)

Science and Technology and Engineering Education (1960)

Science (1654)

Environment and Ecology (1029)

Civics and Government (1)

Economics (787)

Geography (214)

History (1025)

World Languages (167)

3. Select a **Grade Level** or **Band** from the drop-down list.

-- Select a Grade Level --

3rd Grade (496)

4th Grade (741)

5th Grade (702)

6th Grade (685)

7th Grade (800)

8th Grade (1304)

Commencement (1230)

9th Grade (101)

10th Grade (329)

11th Grade (75)

12th Grade (174)

-- Select a Grade Level --

For the purpose of this example, we will design an assessment for **Grade 4 Mathematics**.

4. Select a **Question Type** – **Multiple Choice**, **Constructed Response**, **Short Response** or **Extended Response** items. Choose **All** to search for every type of question.

Question Type(s):

-- All --

-- All --

Constructed Response (101)

Extended Response (21)

Multiple Choice (318)

Short Response (69)

5. Click the **Search** button. A list of test items that match your search criteria will be returned.

Search

Your search returned 142 results for number. 1 2 3 4 5 6 7 »

Select All

Mathematics - 4th Grade

Standard(s): M4.D.1.1.1

What numbers should be next in the pattern shown below?

14, 14, 15, 15, 16, ,

F 15, 16
G 16, 16
H 16, 17
J 17, 17

Mathematics - 4th Grade

Standard(s): M4.A.1.2.1

What fraction on the number line below is in the wrong place?

Selecting Test Items

- To include an item on your assessment, place a checkmark in the square to the left of the item.

Mathematics - 4th Grade

Standard(s): M4.D.1.1.1

What numbers should be next in the pattern shown below?

14, 14, 15, 15, 16, ,

F 15, 16
G 16, 16
H 16, 17
J 17, 17

As you do so, the item will be added to your **Assessment Items**:

Mathematics - 4th Grade You currently have 1 item(s) [View Assessment](#)



NOTE: To view your **Saved Items** list, click **View Assessment**.

- Place a checkmark next to **Select All** to add all of the items on the current page to your **Assessment Items**.

Your search returned 142 results for number.

Select All

Build Assessment

- When you have selected all of the items you feel are necessary, click **Build Assessment** at the bottom of the page
- The **Assessment Items** you chose will appear with capabilities to **Move** or **Delete** the questions. Tabs will be present to select various views of the assessment, **Student Version**, **Teacher Version**, and **Answer Key**.

Current Assessment Questions Selected

[Find More Items](#)



Student Version

Teacher Version

Answer Key

Mathematics - 4th Grade

[Delete](#)

[Move Up](#)

[Move Down](#)

What numbers should be next in the pattern shown below?

14, 14, 15, 15, 16, ,

F 15, 16

G 16, 16

H 16, 17

J 17, 17

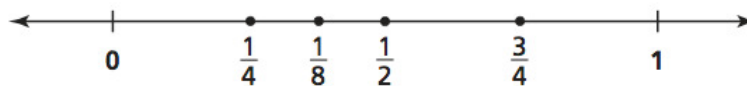
Mathematics - 4th Grade

[Delete](#)

[Move Up](#)

[Move Down](#)

What fraction on the number line below is in the wrong place?



Search by Standard/Eligible Content

Sometimes a search for test items will produce an overwhelming amount of search results. To narrow your results, you can perform a **Search by Standard/Eligible Content**, which will allow you to filter your search results by **Standard** or **Eligible Content** statements.

- Scroll to the top of the page above your search results, and click on the **plus sign (+)** to the left of **Search by Standard/Eligible Content**.

[+ Search by Standard / Eligible Content:](#)

- A list of all **Standards** and **Eligible Content** statements that were assessed will appear. You can select **Standard(s)** or **Eligible Content** statements by placing a checkmark in the square to the left of them, allowing you to assess specific skills.

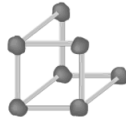
| | | |
|-------------------------------------|------------|--|
| <input checked="" type="checkbox"/> | M4.B.2.1.1 | Use or read a ruler (provided) to measure to the nearest 1/4 inch or centimeter. |
| <input checked="" type="checkbox"/> | M4.B.2.2.1 | Make reasonable estimates of weights, lengths and capacities of familiar objects (measurements in the same system). |
| <input checked="" type="checkbox"/> | M4.C.1.1.2 | Identify or classify three-dimensional figures (cube, sphere, rectangular prism and pyramid). |
| <input checked="" type="checkbox"/> | M4.C.1.2.1 | Identify points, lines, line segments or rays. |
| <input checked="" type="checkbox"/> | M4.C.1.2.2 | Identify parallel and perpendicular lines. |
| <input checked="" type="checkbox"/> | M4.D.1.1.1 | Extend or find a missing element in a numerical or geometric pattern (+, - or x may be used – numerical patterns must be whole numbers). |

- Click **Search** to filter your search results. You can then select questions to add to your **Cart**.



Mathematics - 4th Grade

Heather used straws of equal length and pieces of clay to make a model shaped like a cube. A diagram of her unfinished model is shown below.



Part A
Draw the remaining edges and vertex in the diagram to complete her model.

Part B
How many straws, in all, will she use to make the finished model?

Answer _____ straws

- When you have selected all of the items you feel are necessary, click **Build Assessment**.



Reordering or Removing Items in an Assessment Document

Clicking on **View Assessment** or **Build Assessment** will generate a list of the test items that are in your list of **Assessment Items**. The test items will appear in whatever order they were selected in the steps above.

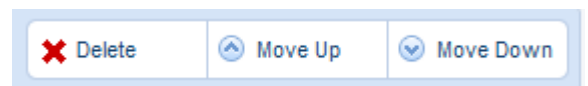
The screenshot shows the 'Current Assessment Questions Selected' interface. At the top, there are tabs for 'Student Version', 'Teacher Version', and 'Answer Key'. Below the tabs, there are two question cards. The first card is titled 'Mathematics - 4th Grade' and contains the question: 'What numbers should be next in the pattern shown below?' followed by the sequence '14, 14, 15, 15, 16, [], []'. Below the question are four multiple-choice options: F 15, 16; G 16, 16; H 16, 17; and J 17, 17. The second card is also titled 'Mathematics - 4th Grade' and contains the question: 'What fraction on the number line below is in the wrong place?'. Below the question is a number line from 0 to 1 with tick marks at 0, 1/4, 1/8, 1/2, 3/4, and 1. Each question card has a 'Delete' icon (a red X) and 'Move Up' and 'Move Down' arrow icons.

At times the order of the test items may be inconvenient:

- Longer, more involved **Constructed Response** items may appear at the beginning of the test, while **Multiple Choice** items may appear at the end
- An educator may wish to create several versions of the same assessment, reordering the questions on each to prevent plagiarism in the classroom

Users may wish to change the order of the items to better suit their needs:

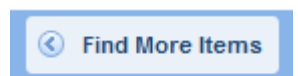
- To re-order manually the items on the assessment, click on the **Move Up/Move Down** icons next to the test items you wish to move. The items will move up or down the list one space with each click.



- To delete a test item from your assessment, and from the **Assessment**, click the **Delete** icon next to the item. To clear them all, click **Clear Assessment Items** on the **Assessment Creator** tab.

You currently have 20 item(s) [View Assessment](#) [Clear Assessment Items](#)

- To locate additional assessment items, click **Find More Items**. Place a checkmark next to any additional items to include them in your **Cart**.

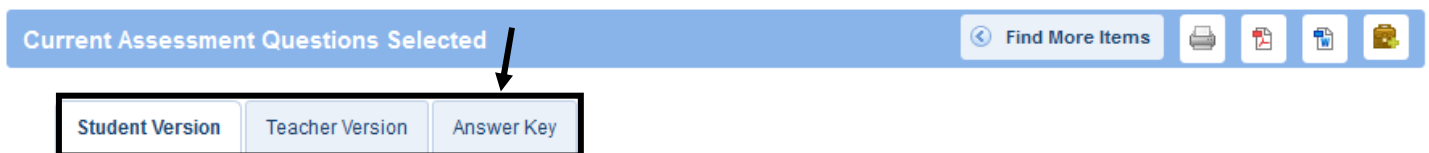


Saving an Assessment Document

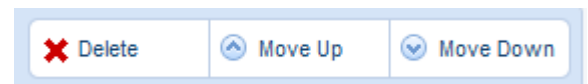
In addition to the **Student Version** of the assessment document, users can also preview the **Teacher version** and the **Answer Key**.

- The **Student Version** contains test items only
- The **Teacher version** contains the test items, along with the answer key and scoring rubrics
- The **Answer Key** does not contain test items, only the answer key and scoring rubrics

1. Select the appropriate **Version** of the **Assessment**.



2. Use the **Move Up/ Move Down** icons to order the test items.



3. **Delete** any questions you no longer wish to include.

4. Select an option for how you wish to save the **Assessment**:

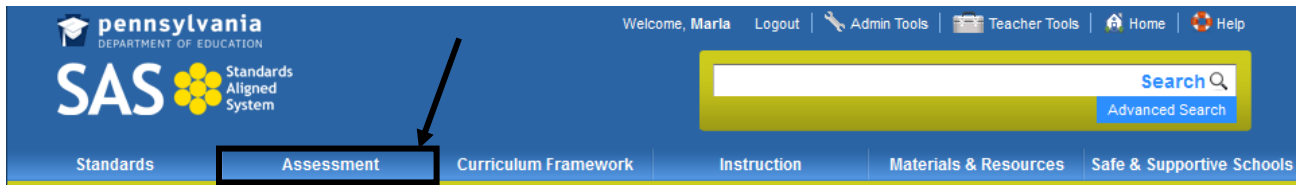


- **Print** – print the assessment without saving it.
- **PDF** – save the assessment as a PDF file.
- **Word** – save the assessment as a Microsoft Word document.
- **ePortfolio** – save the assessment to My ePortfolio as a PDF file (All 3 versions of the Assessment will be saved in the ePortfolio)

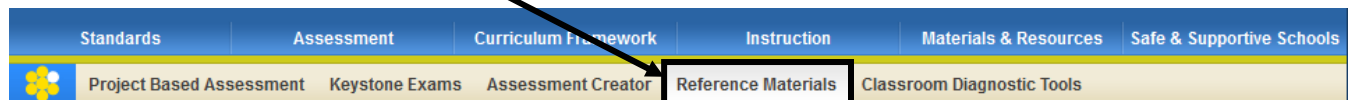
Reference Materials

The **Reference Materials** tab provides access to resources related to assessment. These resources include links to online resources, PDF files and Microsoft PowerPoint presentations.

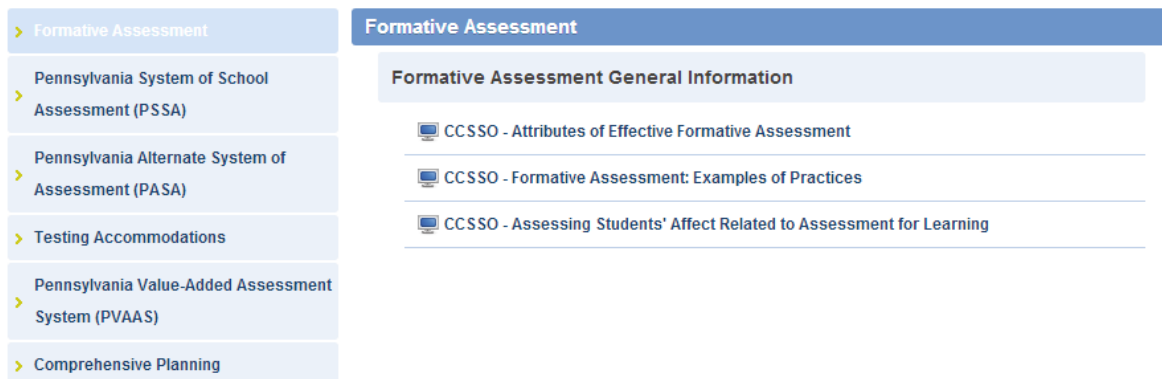
1. Click **Assessment** on the **Navigation Bar**.



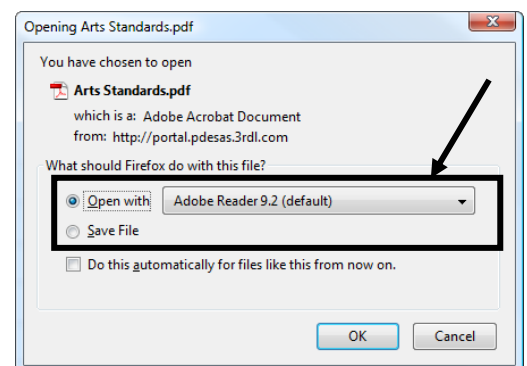
2. Click the **Reference Materials** tab.



3. Click on the appropriate sub-topic, and then click the title of the document you wish to view:



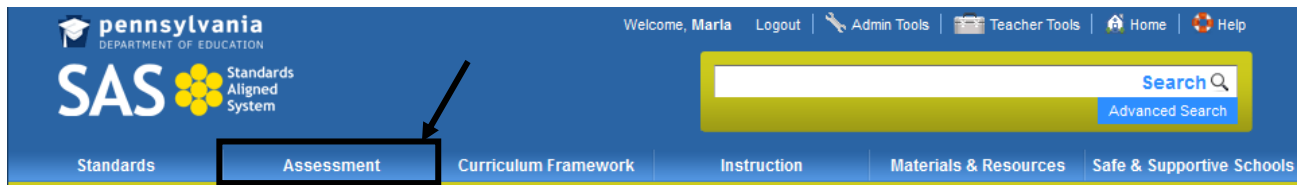
4. You will be prompted to either **Open** the file, or **Save** the file to a location on your hard drive, file server, or other storage device.



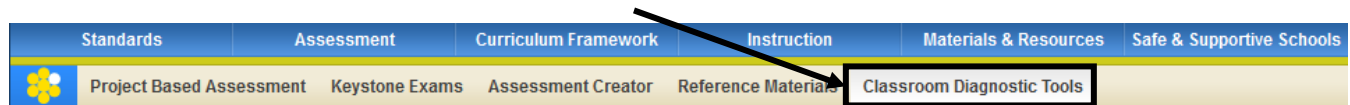
Classroom Diagnostic Tools

The **Pennsylvania Department of Education** has developed on-line classroom diagnostic assessments for Reading/Literature, Mathematics, and Science. The diagnostic assessments are currently available for students in grade 6 through high school, and will be available for students in grade 3 through high school shortly.

1. Click **Assessment** on the **Navigation Bar**.



2. Click the **Classroom Diagnostic Tools** tab.







- Click the **link** to access the DRC eDirect system for the **Classroom Diagnostic Tools**.
- Review any documentation regarding the **Classroom Diagnostic Tools**.

Classroom Diagnostic Tools (CDT)

The Pennsylvania Department of Education has developed on-line classroom diagnostic assessments for reading, mathematics, and science. The diagnostic assessments will be available for students in grade 6 through high school. The CDT is available for Mathematics, Science and Reading/Literature.

To access enrollment information and other documents for the Classroom Diagnostic Tools, please visit <https://pa.drccdirect.com>.

| | |
|-----------------------|---|
| > General Information | General Information |
| > Parent Resources | General CDT Information |
| |  August 2013 Assessment Update |
| |  Classroom Diagnostic Tools (CDT) Overview |
| |  CDT Frequently Asked Questions |
| |  Online Calculator Manual for CDT and Keystone Exams |

This page is intentionally blank.