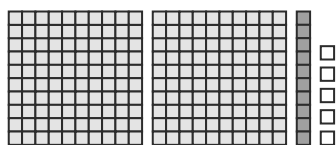


**Additional  
Practice 5-5****Use Sharing to  
Divide: Two-Digit  
Divisors****Another Look!**

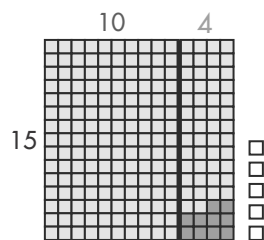
Bo has 215 baseball cards  
to divide equally among 15 friends.  
How many cards will each friend get?  
Will there be any cards left?



Model with place-value blocks.



Regroup the blocks.



$15 \times 10 = 150$

$215 - 150 = 65$

$15 \times 4 = 60$

$65 - 60 = 5 \text{ left over}$

$$\begin{array}{r} 14 \\ 15 \overline{)215} \\ \underline{-150} \phantom{0} \\ 65 \\ \underline{-60} \phantom{0} \\ 5 \end{array}$$

21 tens  $\div$  15 equal groups = 1 ten in each group  
15 groups of 10 = 150  
65 ones  $\div$  15 equal groups = 4 ones in each group  
15 groups of 4 = 60  
5 cards left over

$215 \div 15 = 14 \text{ R}5 \text{ because } 15 \times 14 + 5 = 215.$

Each friend will get 14 cards, with 5 cards  
left over.

**Leveled Practice** In 1–8, find the quotient.

1.  $\square\square \text{ R } \square$

$$\begin{array}{r} 19 \overline{)359} \\ \underline{-\square\square\square} \\ \square\square\square \\ \underline{-\square\square\square} \\ \square\square \end{array}$$

2.  $\square\square$

$$\begin{array}{r} 32 \overline{)512} \\ \underline{-\square\square\square} \\ \square\square\square \\ \underline{-\square\square\square} \\ \square \end{array}$$

3.  $43 \overline{)746}$

4.  $22 \overline{)800}$

5.  $70 \overline{)632}$

6.  $62 \overline{)779}$

7.  $40 \overline{)920}$

8.  $29 \overline{)332}$

Remember to  
compare the remainder  
to the divisor.



9. Why can the calculations on the side be thought of as simpler problems? Describe the simpler problems.

1 2 R13

80)973

- 800

173

- 160

13

← 97 tens ÷ 80 groups

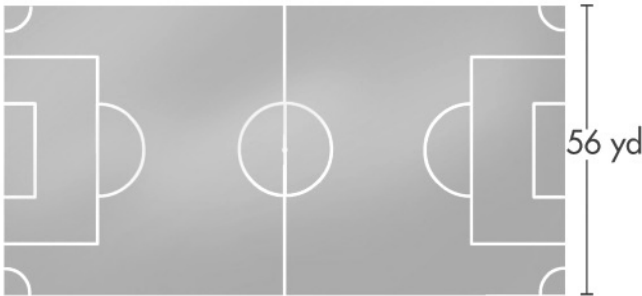
← 80 × 1 ten

← 173 ones ÷ 80 groups

← 80 × 2 ones

10. **Construct Arguments** A county has 88 schools. The county received 992 new computers. Are there enough computers so that each school can get 11 new computers? Explain.

11. Twin Oaks Soccer Field is a rectangle. The longer side of the field is 108 yards long. What is the perimeter of the field?



12. **Higher Order Thinking** Liza makes 20 minutes of phone calls each day. Which plan will give Liza enough minutes for June, with between 30 and 50 minutes left? Show your work.

13. Mark and his brother signed up for the Catch Up phone plan. They share the minutes every month equally. How many minutes can Mark use each day without going over his share of minutes?

**Assessment Practice**

14. Find an expression that gives a quotient of 16. Write the expression in the box.

Quotient: 16		
600 ÷ 40	620 ÷ 40	640 ÷ 40
644 ÷ 40	660 ÷ 40	680 ÷ 40

DATA

Speed Link Company Phone Plans	
Plan Name	Number of Minutes Per Month
Connect	550
Chat	625
Share	650
Catch Up	700